

from Bodine Electric Company

## CCC Marking Options for OEM Gearmotors and Motors



Industrial Glass Coating Equipment / Rotary Cathodes

A U.S. manufacturer of cathode coating equipment needed an AC inverter-duty gearmotor that complied with Chinese governmental safety requirements. The equipment is used to make components for applications such as touch screens, solar panels, automobile parts, architectural glass, optics, and electronics. To meet Chinese import regulations the drive system for the coater needed to carry the **Chinese Compulsory Certificate (CCC)** mark.

Bodine engineering quickly developed a special order type 34R-FX Inverter-duty AC gearmotor in full compliance with all the requirements for construction and labeling, including the CCC mark. With some modifications most of Bodine's standard permanent magnet DC models and many AC models currently can meet the CCC requirements, and almost any model can be tested to meet CCC standards for OEM applications.

- Fully CCC compliant with CCC Chinese language nameplate added
- AC 3phase, 230 VAC inverter-duty gearmotor
- Speed range from 1.3-24 rpm
- Rated torque of up to 350 lb-in

### application insights

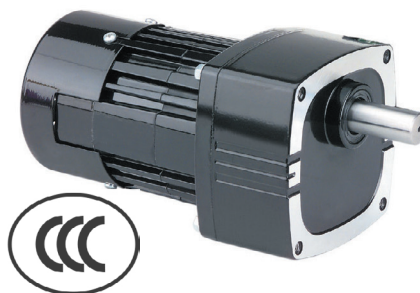
#### The Design Requirements

A US manufacturer needed a gearmotor that met Chinese CCC requirements.

#### The Solution

Bodine engineers developed a type 34R-FX inverter-duty AC gearmotor that was fully CCC compliant and approved for import to China.

Special order 34R-FX Series Parallel Shaft AC 3-Phase Inverter Duty Gearmotor  
([Click here](#) for more information)



Bodine Electric Company AC MOTOR		交流电动机	
TYPE 34R4BFPF	型号	S/N	序列号
PHASE 3	相数	AMB°C 40	环境温度
VOLTS 230	电压	PROTECTION CLASS IP20	防护等级
A 1.0	电流	DEGREE OF ENCLOSURE	绝缘等级
Hz 60	频率	INSULATION F	绝缘等级
W 124	功率	INVERTER DUTY RATINGS	变频范围
r/min 1700	转速	PERFORMANCE BASED ON	变频器的参数
TORQUE 0.70 Nm	扭矩	VPWM INVERTER	变频器的参数
TIME S1 [CONT]	工作制	Hz 10-120	频率范围
		r/min 120-2960	转速范围
		TORQUE VT 1.1 Nm @ 60Hz	扭矩随频率改变

Most Bodine permanent magnet DC motors with Class B or Class F winding can be CCC certified. The 24VDC PMDC stock models are exempt from CCC testing requirements. Our AC models type K-2, 30R, 34R4/6BEPP/CI, 42R, and our 48R AC gearmotors and motors can be CCC certified as well. Special modifications and a Chinese-language nameplate are required. Minimum order quantities might apply. Please contact us at [info@bodine-electric.com](mailto:info@bodine-electric.com) with your CCC requirements.



Bodine type 24A, 33A and 42A motors and gearmotors